

# Rittal – The System.

Faster – better – everywhere.

## ► Universal light with integral motion detector - 4155110

Date : Apr 30 , 2021

ENCLOSURES

POWER DISTRIBUTION

CLIMATE CONTROL

IT INFRASTRUCTURE

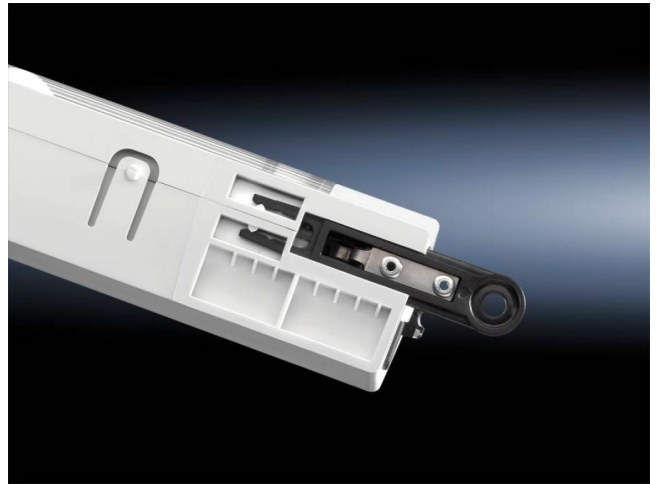
SOFTWARE & SERVICES

FRIEDHELM LOH GROUP



# Universal light with integral motion detector - 4155110

created: 04.30.2021 build on <https://www.rittal.us/>



## Product Description

Description	Compact 18 W fluorescent tubes with high light output.
Benefits	Simple fast mounting
Material	Plastic
Supply includes	Assembly components Light (bulb) Light cover Integral motion detector Universal light
Dimensions	Height: 95 mm (3.7 ") Width: 345 mm (14 ") Depth: 55 mm (2.2 ")
Installation options	SE profiles to the side of roof frames: direct SE sections on front and rear of roof frame: with TS adapter bracket TS SE vertical section: with TS adapter bracket TS horizontal profile from roof frames: direct AE CM TP: with universal bracket AE: with rail for interior installation
Rated operating voltage	110V - 240V 1~ 50Hz/60Hz
Rated power Pel	18 W
Rated insulation voltage	250 V AC
Rated impulse withstand voltage, phase to phase	2500 V AC

Equipment (electrical)	Ballast: Wide range voltage EB Light (bulb): Compact fluorescent lamp G24q-3 backplate Jack/outlet (type): D ground pin (type F CEE 7/3) Switch (type): Integral on/off/motion detector mode Integral motion detector: yes
Protection category	I (PE conductor)
Connection options	Through-wiring (configuration of row of luminaires) Power supply through connector
Light – installation type	Screw fastening
Light cover	yes
Operating temperature	Ambient temperature range: -15°C...+45°C Storage: -20°C...+70°C
Packaging unit	1 pc(s).
Weight/packaging unit	0.92 kg (2 lb.)
EAN	4028177679832
Customs tariff number	94054095
Product description (long)	SZ Universal light WHD: 343x95x55 mm 18 W 110-240 V 50/60 Hz with integral motion detector with earthing-pin socket VDE